

TAMRON

LENS CATALOGUE



CONTENTS

- 4 E-Mount-Duo**
Lenses for mirrorless full format cameras
- 8 Professional**
Fast SP-Trinity and SP fixed focal lengths
- 12 Creative**
Compact and fast zoom lenses
- 14 Travel**
Handy and powerful lenses for on the go
- 16 Nature and Sports**
Macro and Telezoom
- 18 Product range**
Further lenses
- 19 Warranty and service**
Contact with Tamron
- 20 Technology**
Research and innovation
- 24 Lens overview**
All lenses at a glance



Uncover your creativity

For more than 60 years, Tamron lenses have been the “creative eyes” of passionate photographers in the whole world. Our advanced optical Technology guarantees shots full of details and assists you in recording the important moments in life in impressive images for eternity.

E-Mount fixed focal lengths Compact trio for pictures at the highest level

20mm, 24mm and 35mm - three handy wide-angle lenses with uniform dimensions and large magnification. These fixed focal lengths were designed to enable photographers to give new expression to their creativity.



20 mm · F/16 at 1.6 sec. · ISO 50



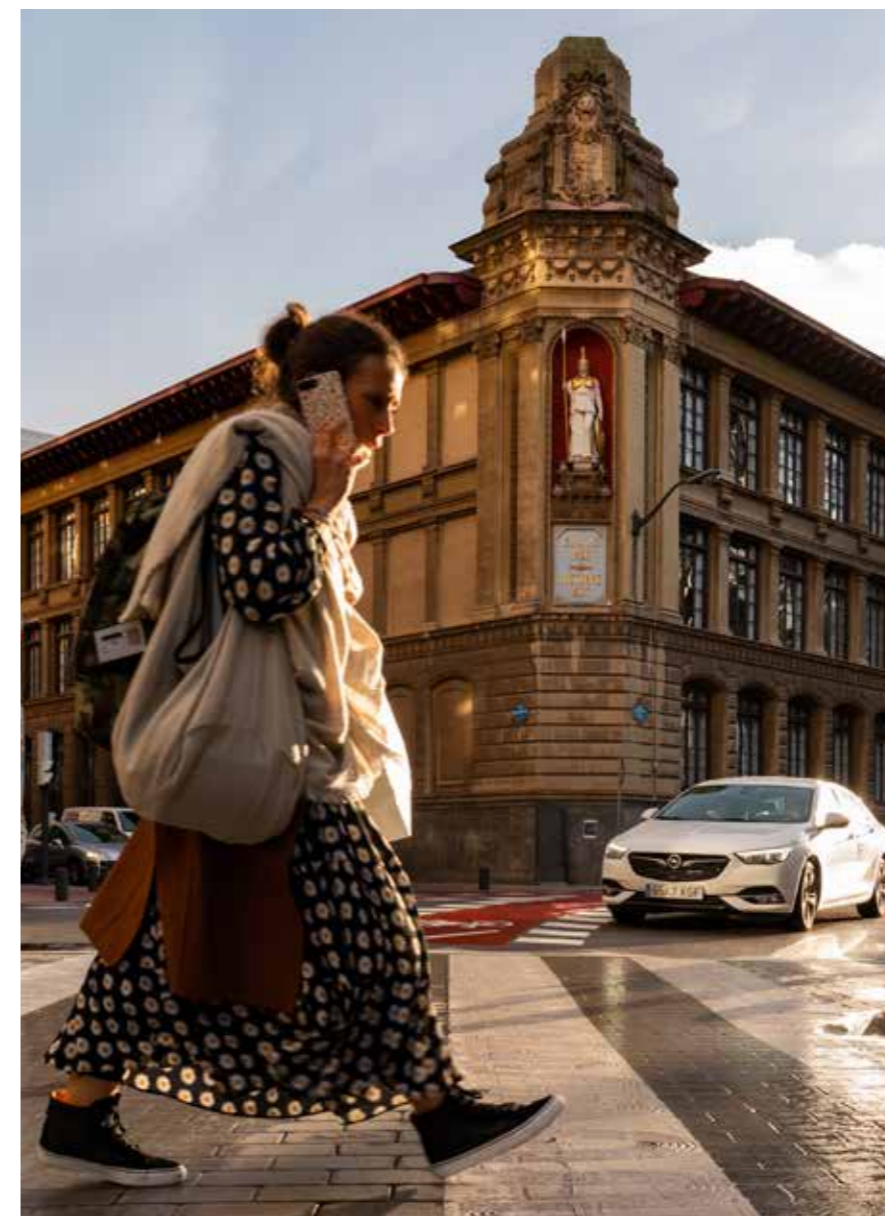
20 mm · F/13 at 25 sec. · ISO 50



20mm F/2.8 Di III OSD M1:2

The large angle of view of this ultra-wide angle lens is ideal for fascinating image compositions and expansive panoramas. The minimum object distance of only 0.11 m allows images with expressive perspective and dramatic depth.

Di III **OSD** **MR** **FLR** **LD**
FÜR VOLLFORMAT | SONY DSLM | Model F050



24 mm · F/8 at 1/250 sec. · ISO 640

„With the 24 mm wide-angle lens, I can take pictures at close-range - this way I can create ingenious macros with a magnification of 1:2.“

Klaus Wohlmann,
Travel and street photographer,
Enger, Germany



24mm F/2.8 Di III OSD M1:2

Handy super wide-angle lens for gripping reportage and landscape shots. The low close-up limit (0.12 m) enables exciting close-ups with a magnification of 1:2. As with all E-Mount lenses from Tamron the filter diameter is 67 mm.

Di III **OSD** **MR** **FLR** **LD**
FÜR VOLLFORMAT | SONY DSLM | Model F051

35mm F/2.8 Di III OSD M1:2

With a length of 64 mm and a diameter of 73 mm, this wide-angle lens has the same dimensions as the other fixed focal lengths of the E-Mount series. Its speed of F/2.8 and the fast quiet OSD autofocus are also common features of this trio.

Di III **OSD** **MR** **FLR** **LD**
FÜR VOLLFORMAT | SONY DSLM | Model F053



35 mm · F/2.8 at 1/60 sec. · ISO 400



35 mm · F/2.8 bei 1/60 at. · ISO 800

E-Mount zoom lenses

Fast all-rounders for mirrorless full format

17-28mm, 28-75mm and 70-180mm - this trio sets new standards for fast zoom lenses. With their constant aperture of F/2.8 and compact dimensions, they are ideal for a wide variety of subjects.



17-28mm at 17 mm · F/4 at 1/2500 sec. · ISO 200

With the introduction of E-Mount lens series a new era in the history of Tamron has begun. The three zoom lenses - the 17-28mm F/2.8 Di III RXD, the 28-75mm F/2.8 Di III RXD and the new 70-180mm F/2.8 Di III VXD stand for high optical quality and technological innovation. Outdoor and sports photographer Phillip Ruopp appreciates the continuous speed of F/2.8 and the exceptionally high resolution of the lenses. Special optical lenses ensure excellent imaging at any focal length. „Sharpness and details are phenomenal,” says Ruopp. „The autofocus is lightning fast and to the point even in dynamic scenes.” Practical: The three zoom lenses are not only amazingly light, but with a uniform filter size of 67 mm they are also very handy.



70-180mm at 70 mm · F/5.6 at 1/80 sec. · ISO 320



70-180mm at 180 mm F/8 at 1/320 sec. · ISO 400



70-180mm at 145 mm · F/2.8 at 1/2500 sec. · ISO 200

70-180mm F/2.8 Di III VXD

The pleasantly compact and lightweight telephoto zoom lens with a fast aperture is the newest lens in the Tamron E-Mount lens series. With the new VXD autofocus, it is fully compatible with the camera's fast hybrid AF and eye AF. As with the already available zoom lenses 17-28mm and 28-75mm, the filter diameter is 67mm.

Di III VXD MR IF FLR ZL
FOR VOLLFORMAT | SONY DSLM | Model A056



EISA AWARD Best Product 2019-2020
WIDE-ANGLE ZOOM LENS
Tamron 17-28mm F/2.8 Di III RXD

17-28mm F/2.8 Di III RXD

Fast wide-angle zoom lens for particularly dynamic perspectives. With a length of 99 mm and a weight of just 420 g, it is exceptionally compact and lightweight for its class. LD and XLD lenses provide excellent imaging performance.

Di III RXD MR XLD LD IF FLR
FOR VOLLFORMAT | SONY DSLM | Model A046



EISA AWARD Best Product 2018-2019
MIRRORLESS STANDARD ZOOM LENS
Tamron 28-75mm F/2.8 Di III RXD

28-75mm F/2.8 Di III RXD

Powerful standard zoom lens with F/2.8 power for shooting with attractive background blur (bokeh). Ideal for a wide range of subjects, from landscape to architecture to portraits. With 117.8 mm length and 550 g weight particularly light and compact.

Di III RXD MR XLD LD IF FLR
FOR VOLLFORMAT | SONY DSLM | Model A036



28-75mm at 35 mm · F/4.5 at 1/1600 sec. · ISO 100



Advantages of E-Mount zoom lenses

- 1 Professional power
- 2 Light and compact
- 3 Fast and quiet autofocus

The constant aperture of F/2.8 offers the photographer maximum freedom of design. The razor-sharp main motif can be beautifully set against a soft background.

Tamron's E-Mount lenses are very compact and light. Combined with a mirrorless system camera, they are perfectly balanced and weigh only 1.780 grams together.

RXD and VXD autofocus were developed especially for compact system cameras. They focus on the subject quickly, accurately and silently - ideal not only for still images but also for high-quality video recording.

G2 Trinity

Highest image quality and performance for professional demands

The Tamron Trio SP 15-30mm F/2.8, SP 24-70mm F/2.8 and SP 70-200mm F/2.8 leaves nothing to be desired with respect to photography. Not without reason, the powerful G2-Trinity is part of the standard equipment of demanding professional photographers.



SP 15-30mm at 26 mm · F/14 at 3 sec. · ISO 100



"With the fast zooms of the SP series, I can capture landscapes and weather phenomena exactly as I have seen and experienced them with my own eyes."

Bastian Werner,
Weather and landscape photographer,
Mühltal

When it comes to photographic equipment, professional photographers like Bastian Werner do not compromise. They need lenses that are top class both visually and mechanically. "Highest image quality and maximum sharpness are a must in any case. But I do not want to miss the fast ultrasound autofocus and a solid image stabilisation in everyday life," says Werner. And he cites another reason why many professionals choose Tamron's G2-Trinity



SP 15-30mm at 30 mm · F/4 at 15 sec. · ISO 100

SP 15-30mm G2, SP 24-70mm G2 and SP 70-200mm G2 with F/2.8 aperture: the sturdy design and durability of the lenses. "Regardless whether storm, rain or snow - I cannot take into account my high-quality equipment, when I need to move fast," explains the experienced storm hunter and weather photographer. "Tamron meets all my requirements for a durable lens with the SP Series."



SP 24-70mm at 65 mm · F/2.8 at 1/100 sec. · ISO 250



SP 24-70mm at 70 mm · F/5.0 at 1/250 sec. · ISO 250



SP 15-30mm at 20 mm · F/14 at 1/250 sec. · ISO 100



SP 15-30mm F/2.8 Di VC USD G2

Professional wide-angle zoom lens with VC image stabilisation for sharp and detailed images. Special XGM and LD elements correct for optical distortion and chromatic aberrations. The new AX coating eliminates annoying reflections in backlit shots.

Di SP VC USD eBAND FLR MR LD
DMPU | CANON DSLR | NIKON DSLR | Model A041



SP 24-70mm F/2.8 Di VC USD G2

Fast standard zoom lens of the latest generation, which was specially developed for the high demands of professional photographers. The advanced optical design with 2 XR, 3 LD and 3 GM elements guarantees exceptionally high reproduction performance.

Di SP VC USD eBAND MR FLR LD ZL
IF DMPU | CANON DSLR | NIKON DSLR | Model A032



SP 70-200mm F/2.8 Di VC USD G2

Compact, fast telephoto zoom for professional use with excellent optical performance, powerful VC image stabiliser (5 EV steps*) and ultra-fast, precise USD autofocus. The short adjustment distance of 0.95 m allows detailed close-ups.

Di SP VC USD eBAND MR FLR LD ZL
IF DMPU | CANON DSLR | NIKON DSLR | Model A025

* Coating when using the VC mode 3 according to CIPA standard.

The Hamburg advertising photographer Thomas Kettner regularly uses the SP series zoom lenses and fixed focal lengths in his commissioned work for clients from various industries. "The resolution and optical correction of the lenses are outstanding," he says. Since his photographs are also used as large-scale campaign motifs, Kettner pays special attention to the focus. "If the sharpness is not perfect, you can see it immediately when enlarging," he says. "Luckily I can rely on the USD autofocus in every way. The reject is much lower than with conventional lenses."



"Tamron SP lenses combine reliably high image quality with an impressive equipment. The price/performance ratio is simply unbeatable."

Thomas Kettner,
Advertising and fashion photographer,
Hamburg

Advantages of the SP Trinity

- High power and professional image quality**
High-quality special optical glasses guarantee excellent reproduction performance. The constant aperture of F/2.8 offers the photographer maximum freedom of design.
- Sturdy construction**
SP lenses are designed for everyday use. The sturdy metal housing is sealed elaborately, and the front lens with an easy-to-clean fluorine coating is protected from contamination.
- Powerful dual processor**
The integrated dual MPU ensures a fast and precise ultrasonic autofocus as well as an exact image stabilisation. The photographer can rely on his lens in every situation.



SP 70-200mm at 131 mm · F/2.8 at 1/200 sec. · ISO 100



SP 70-200mm at 200 mm · F/2.8 at 1/80 sec. · ISO 400



SP 70-200mm at 200 mm · F/2.8 at 1/80 sec. · ISO 400



SP 35mm at 35mm · F/1.4 at 1/800 sec. · ISO 200

SP fixed focal lengths Maximum image quality, no compromise

High-intensity fixed focal lengths guarantee maximum image quality and comfort. Professional photographers appreciate the unrivalled high sharpness, the perfect reproduction and the handy dimensions of these lenses.



SP35mm F/1.4 Di USD

Designed to celebrate the 40th anniversary of the SP Series, this ultra-fast wide-angle lens delivers the ultimate in optical performance. The 14 lenses, including 4 LD and 3 GM elements, are coated with the new BBAR-G2 coating, which ensures high brilliance even in backlit scenes.

Di SP USD LD
CANON DSLR NIKON DSLR Model F045



SP 35mm F/1.8 Di VC USD

This lightweight telephoto fixed focal length is ideal for professional portrait and beauty shoots. The high power allows a perfect sharpness-blur balance. The main subject is displayed in detail and sharp, while the background is resolved in soft blur (bokeh).

Di SP VC USD eBAND MR FLR LD XLD
IF CANON DSLR NIKON DSLR SONY DSLR Model F012



SP 45 mm F/1.8 Di VC USD

Fixed focal length lenses with high resolution performance for maximum sharpness and detail. Both feature a short near distance, large F/1.8 aperture and a VC Image Stabiliser - a combination that delivers outstanding image quality in every situation.

Di SP VC USD eBAND MR FLR LD
CANON DSLR NIKON DSLR SONY DSLR Model F013



SP 85 mm F/1.8 Di VC USD

This lightweight telephoto fixed focal length is ideal for professional portrait and beauty shoots. The high power allows a perfect sharpness-blur balance. The main subject is displayed in detail and sharp, while the background is resolved in soft blur (bokeh).

Di SP VC USD eBAND MR FLR LD XLD
IF CANON DSLR NIKON DSLR SONY DSLR Model F016

17-35mm and 35-150mm Modern zoom lenses for passionate photographers

The ideal balance between high power and compact design - these two zoom lenses with aperture F/2.8-4 are the ideal companion for mobile photographers who do not want to give up high image quality.



35-150mm at 73 mm · F/8 at 25 sec. · ISO 100



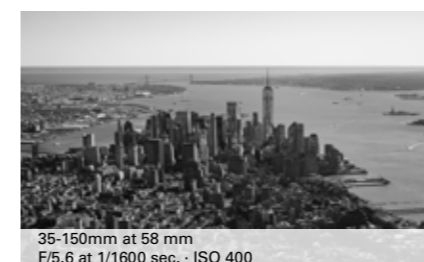
35-150mm at 150 mm · F/4 at 1/200 sec. · ISO 400



35-150mm at 35mm · F/5.6 at 1/2500 sec. · ISO 400



17-35mm at 17 mm · F/8 at 2 sec. · ISO 100



35-150mm at 58 mm
F/5.6 at 1/1600 sec. · ISO 400



17-35mm at 35mm
F/8 at 2.5 sec. · ISO 100



17-35mm F/2.8-4 Di VC OSD

Compact and lightweight wide-angle zoom lens, which is ideal for coverage and landscape photos. The combination of short focal length and short close range of only 0.28m allows expressive close-ups. The BBAR coating ensures brilliant images even in backlight conditions.

Di OSD FLR MR LD
CANON DSLR NIKON DSLR Model A037



35-150mm F/2.8-4 Di VC OSD

Handy telephoto zoom with exceptionally long range. With its wide open aperture, it offers the perfect balance between perfect sharpness and brilliant bokeh. The powerful dual MPU ensures fast autofocus and accurate image stabilization.

Di VC OSD FLR MR LD
CANON DSLR NIKON DSLR Model A043

The best lens is the one that you take along just in case. And with the compact zoom duo, there is no excuse anymore. Together, 17-35mm and 35-150mm only weigh around 1.25 kg, making them the ideal choice for all photographers who do not want to forego high image quality and design options, even on summer holidays, family outings or hikes. The high power of F/2.8 to F/4 allows creative play with sharpness and blur. "The 17-35mm covers the wide-angle range and is ideal for architectural and

landscape shots with beautiful depth," says Martin Krolop, professional photographer from Cologne. "And the directly adjacent 35-150mm goes into the classic telephoto range and is therefore particularly suitable for portrait shots with attractive background blur. "With the large aperture, the background can be resolved in soft blur - ideal for images with a professional touch.

Advantages of the compact zoom duo

- Compact construction**
Lightweight materials and a modern construction make these high quality lenses exceptionally handy. Together, the 17-35mm and the 35-150mm only weight about 1,250 grams. Light enough to carry along on long outdoor tours.
- High power**
With a maximum aperture of F/2.8 in the wide-angle and F/4 in the telephoto, the compact zoom lenses are exceptionally fast. Ideal conditions for professional shots with beautiful background blur (bokeh effect).
- VC image stabiliser and OSD autofocus**
The VC image stabiliser provides sharper images by preventing unsightly shaking in low light. The OSD autofocus focuses on the subject quickly, precisely and silently. It is thereby also suitable for video recordings.

"The combination of 17-35mm and 35-150mm covers an enormous range of focal lengths - the ideal combination for travel and nature photographers who want a high image quality."

Martin Krolop, photographer, Cologne

18-400mm F/3.5-6.3

The compact travel zoom lens for those who like to be on the go

Many focal lengths, one lens With the surprisingly handy 22.2x Ultra Telephoto Megazoom you discover new perspectives and record unforgettable moments exactly as you would like to remember them.



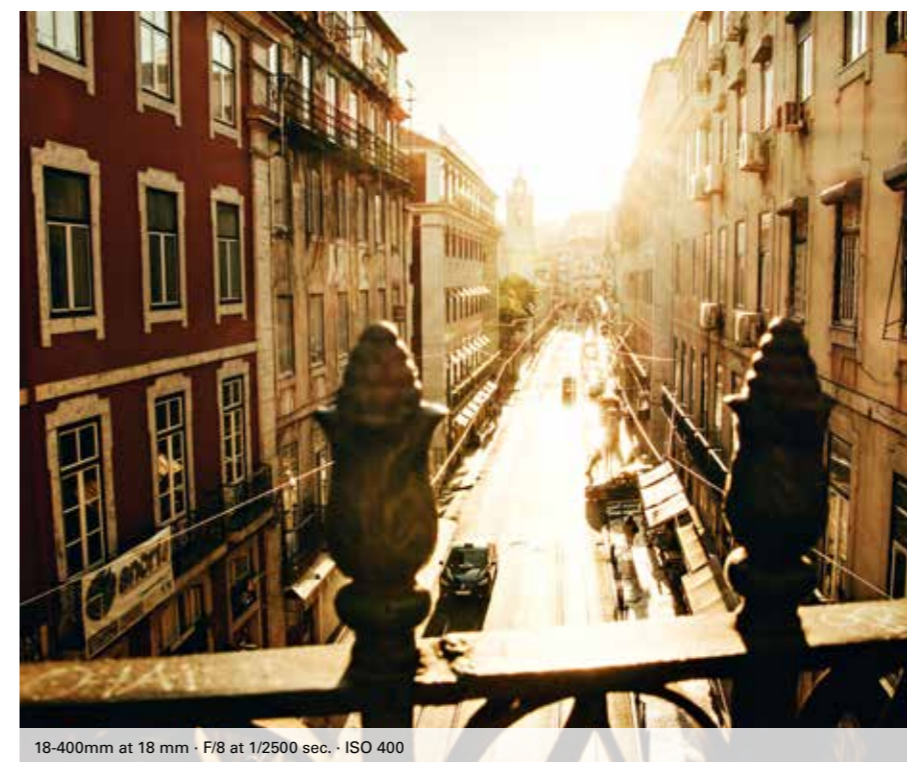
18-400mm at 28 mm · F/4.5 at 1/200 sec. · ISO 160



18-400mm at 23 mm
F/9 at 1/500 sec. · ISO 800



18-400mm at 177 mm
F/6.3 at 1/320 sec. · ISO 400



18-400mm at 18 mm · F/8 at 1/2500 sec. · ISO 400

Does a single lens exist that meets virtually all? The answer is yes, the travel zoom 18-400mm from Tamron. As its name already implies, it is perfect for holidays and leisure, because it includes a whole series of other lenses! From super-wide-angle to super-Telephoto, all types of subjects be photographed. "Whether extensive panoramas or expressive portraits with beautiful background blur - the 18-400mm for DSLR cameras with APS-C sensor is a good choice for any purpose," says the Cologne photographer duo Sallyhateswing, who prefer to have light luggage on holiday. "Among other things, Tamron's travel zooms have already taken us to Rome and Lisbon - and thanks to them, we have seen the cities in a new light. The long range is perfect for capturing architectural and scenic details or to condense the image."



18-400mm F/3.5-6.3 Di II VC HLD

The 22.2-times Ultra-Telephoto megazoom is the ideal travel companion. Despite its compact size and low weight, it offers an enormous range up to 600mm (equivalent to the 35mm format). Even far-away subjects can be zoomed in thereby. HLD autofocus and VC stabilisation ensure successful, sharp shots even in low light.

Di II VC HLD eBAND MR IF ZL LD
CANON DSLR NIKON DSLR Model B028



"The image quality of the 18-400mm has convinced us. This lens fulfils all wishes of travel photographers - and is even suitable for atmospheric portrait shots."

Sallyhateswing,
Fashion and Lifestyle photography,
Cologne

Advantages of travel zoom lenses

- ① Wide range**
With a focal length from the super wide angle to the super telephoto, travel zoom lenses are suitable for panoramic pictures as well as for detailed close-ups of people.
- ② Lightweight and compact**
Modern technologies and high-quality materials ensure compact dimensions and low weight, so you always like to take your travel zoom lens with you.
- ③ Image stabilisation**
The built-in VC image stabiliser reduces in low light and when shooting with telephoto zoom prevents unsightly shaking - and thus ensures sharper images.

SP 90mm F/2.8 Macro Finest details really big



SP 90mm F/2.8 Di VC USD

With this medium telephoto lens you can zoom up to 0.3 m close to your subject. The result are macro shots with fascinating details on a scale of 1:1. Special lenses (14 elements in 11 groups) produce a very high resolution for captivating sharp shots with extremely fine details.

Di SP VC USD eBAND MR FLR LD XLD
IF CANON DSLR NIKON DSLR SONY DSLR Model F017

90 mm · F/8 at 0.5 sec. · ISO 320

Telephoto zooms Close to the action

Long telephoto focal lengths also always mean a long range. With Tamron's Telephoto zooms, even distant details can be photographed at close range.

Fast, faster, fastest - the more speed in the game, the closer lifestyle and action photographer Oliver Güth wants to be in on the action. But not always he can stand right next to the athletes to capture their performance in the image. The solution is telephoto zoom lenses, with which events can be magnified. Tamron has several models on offer: While the lightweight 70-210mm is particularly suitable for nature photography, the compact 100-400mm and the larger SP 150-600mm G2 are also ideal for sports photography. "All achieve high optical performance," says Güth. "And if I want to get even closer with them, I can extend the focal length with one of the two telephoto converters from Tamron by 1.4 or 2.0 times."



"The long focal lengths of telephoto zooms are ideal for sports photography - thrilling action shots and professional portraits succeed this way."

Oliver Güth,
Sports and lifestyle photographer,
Cologne



100-400mm at 240 mm · F/6.3 at 1/5000 sec. · ISO 500



70-210mm at 210 mm
F/4.5 at 1/400 sec. · ISO 1600



100-400mm at 400 mm
F/6.3 at 1/5000 sec. · ISO 640



150-600mm at 600 mm
F/7.1 at 1/2500 sec. · ISO 400



70-210mm F/4 Di VC USD

A compact telephoto zoom with a continuous power of F/4. Despite its complex optical design with 20 lenses in 14 groups, this lens weighs only 850 g. It is ideal for those who like to go on extensive outdoor tours to experience nature and wildlife up close and take photos.

Di VC USD MR FLR LD IF DMPU
CANON DSLR NIKON DSLR Model A034



100-400mm F/4-6.3 Di VC USD

Handy super-telephoto zoom lens with a long range, which can additionally be extended with a Tamron teleconverter. The dual MPU ensures a very precise focus with continuous autofocus (AF-C) with simultaneous image stabilisation. The tripod clamp is available as an optional accessory.

Di VC USD eBAND MR FLR LD
ZL IF DMPU
CANON DSLR NIKON DSLR Model A035



SP 150-600mm F/5-6.3 Di VC USD G2

Powerful ultra-telephoto zoom lens designed specifically for ambitious wildlife and sports photography. Three VC image stabilisation modes, three LD elements as well as eBAND and BBAR compensation ensure high image quality. In addition, the exclusive Flex Zoom Lock allows fast fixation of the zoom in any position.

Di SP VC USD eBAND MR FLR LD
ZL IF DMPU
CANON DSLR NIKON DSLR SONY DSLR Model A022



16-300mm at 16 mm · F/9 at 1/160 sec. · ISO 400

Further zoom lenses

Discover the whole Tamron world! Our current portfolio includes lenses for the most diverse purposes. Whether travel or coverage, portrait or landscape - with zoom lenses from Tamron you unleash your creativity.



**10-24mm F/3.5-4.5
Di II VC HLD**

Ultra-wide-angle zoom lens for APS-C cameras with image stabiliser and fast HLD autofocus. Ideal for creative nature and architecture photography. An aspherical lens and LD elements provide exceptional resolution over the entire zoom range.

Di II VC HLD MR XLD LD ASL IF DMPU
CANON DSLR NIKON DSLR Model B023



**18-200mm F/3.5-6.3
Di II VC**

Classic high-power zoom lens that brings all the benefits of a perfect travel lens for beginners: It is not only compact, light and sturdy, but also has a large telephoto range, allowing you to zoom in on distant subjects or fascinating details.

Di II VC ASL LD IF ZL
CANON DSLR NIKON DSLR SONY DSLR Model B018



**16-300mm F/3.5-6.3
Di II VC PZD MACRO**

This 18.8x megazoom for DSLR cameras with APS-C sensor expands the photographic possibilities with modern optical technology. It covers the huge focal length range from 16mm to 300mm, which corresponds to the equivalent of a 450mm ultra-telephoto.

Di II VC PZD MR LD ASL XR
LXR IF ZL
CANON DSLR NIKON DSLR SONY DSLR Model B016

More lenses can be found under: www.tamron.co.uk

Warranty and service

Our customer service will be happy to help you with questions about your lens or with technical problems.

■ 5 year warranty

The quality of Tamron lenses is guaranteed. In addition, Tamron offers its customers a free warranty extension of five years. In order to be able to claim these in the event of a defect, register your lens online within two months of purchase under 5years.tamron.eu.

Further information under:

www.tamron.eu/uk/service/repair-service/



■ Repairs

The quality of Tamron products is carefully checked before leaving the factory. However, should your lens ever malfunction or become defective, please contact our customer service.

If there is a warranty claim, Tamron will repair the lens free of charge or replace it for free with a replacement device of the same series/a comparable successor model.

If there is no warranty claim, we will inform you about repair options and will gladly provide you with a corresponding offer for the quickest possible repair of your lens.

■ Customer service

Do you have questions about our products and offers or do you need help with operating a lens? Our friendly customer service will be happy to help.

Transcontinenta UK LTD

896 Plymouth Road,
Slough Trading Estate
Slough Berkshire SL1 4LP
support@transcontinenta.co.uk

+44 (0)203 9665947

Service hours:
Mo to Fr, 9:00 am –5:00 pm

For more information about our customer service and answers to frequently asked questions, please visit: www.tamron.eu/uk/service/請

About Tamron

Since its founding in 1950, Tamron Co., Ltd. has been developing high-precision optical products for various applications. Today, we are one of the world leaders in the optical industry. In addition to photo lenses, we also manufacture optical systems for use in industry, transport and security.

Tamron employs approximately 5,000 people worldwide. In addition to the headquarters in Saitama north of Tokyo, there are branches in the USA, Germany, France, Russia, China and India. Tamron lenses and components are manufactured in two factories in northern Japan and two production sites in China and Vietnam.

For nearly seventy years now, Tamron's primary goal has been to grow collaboratively to deliver the highest level of customer satisfaction, to ensure the well-being of our customers, employees and shareholders. We will continue on this path in the future.

The subsidiary of Tamron Europe GmbH in Cologne was founded in 1982. Today, around seventy people work here.

The company name Tamron goes back to Mr. Uhyoue Tamura, a widely acclaimed optical engineer who has laid the foundation for Tamron's success with his technological developments.

Historic milestones

■ **1957** The 135mm F/4.5 is Tamron's first camera lens for mirror reflection cameras

■ **1961** The industrially manufactured 95-205mm F/6.3 is the first affordable SLR telephoto lens

■ **1966** "Tamron Adapt A-Matic" interchangeable lenses with autofocus function

■ **1979** The "Super Performance" (SP) series celebrates its debut

■ **2015** "Human Touch" redesign of the SP series

■ **2017** The 18-400mm F/3.5-6.3 is the world's first 22.2x ultra telephoto megazoom SLR lens

■ **2018** Start of the new lens generation for Sony E-Mount

Our technologies

Since the founding of Tamron in 1950, we have come a long way. From an ambitious start-up to one of the world's leading companies in the optical industry. Tamron's unique track record is based on our over 70 years of expertise and the continuous development of innovative technologies. They support photographers around the world to realise their creative visions.



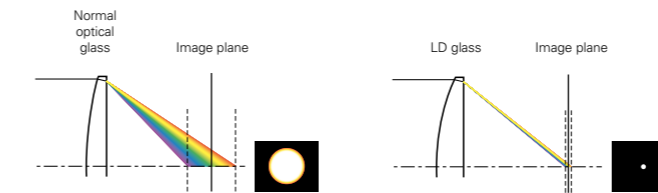
Super Performance (SP) – Lenses for highest professional demands

SP For 40 years, the abbreviation "SP" stands for Tamron lenses that meet the highest photographic standards. When developing these lenses, the best possible image quality is always the focus. Through the use of advanced optical technologies, excellent reproduction performance is achieved, guaranteeing maximum sharpness and detailed reproduction from the centre to the edges of the image. When designing the housing, the developers pay attention to high-quality, extremely durable materials as well as a comfortable, intuitive operation. The result is an innovative lens series that stands out from the crowd. Those looking for stellar performance need look no further than Tamron's SP lenses.

LD and XLD lens elements

LD XLD LD (Low Dispersion) and XLD (eXtra Low Dispersion) elements are manufactured of special glass materials that have low colour dispersion indices. They reduce chromatic aberrations, which appear as colour fringes on the contrast edges and reduce image sharpness. Wide-angle and telephoto focal lengths are mainly affected by this.

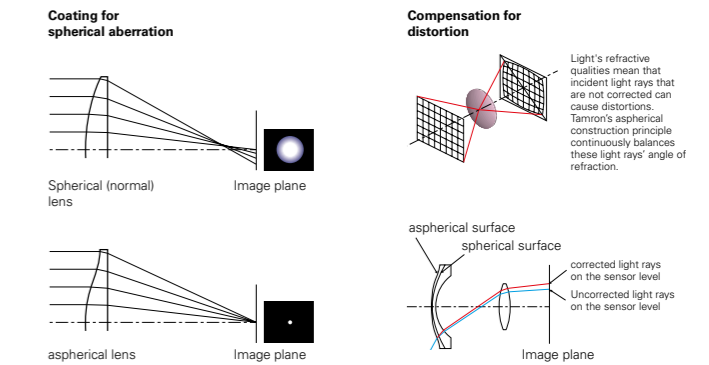
XLD elements are made from high-performance optical glass with an extremely low colour dispersion index. Their properties correspond to those of high-quality fluorite elements, which can also be used to correct problematic chromatic aberrations. Even in the critical border areas of the image, a high resolution is achieved.



Schematic diagram of the chromatic aberration with a normal optical glass (left) and an LD glass (right)

Hybrid-aspheric elements

ASL The abbreviation "ASL" (ASpherical Lens) indicates hybrid aspherical lens elements. These correct typical aberrations of zoom lenses, for example, spherical aberrations (sharpness errors). In addition, you can replace several other optical elements, which favours a more compact design with consistently high image quality.



Coating effects in a lens with an aspherical element (schematic diagram).

AD elements

AD Anomalous dispersion (AD) optical lenses help reduce chromatic aberrations at high frequencies of light. The combination of AD elements with difference lenses made from normal optical glass makes it possible to control light dispersion at specific wavelengths.



Relatively even partial Dispersion ratio.

Extremely high partial dispersion ratio relative to a specific range of wavelengths.

XR and UXR special glasses

XR UXR XR (eXtra Refractive Index) and UXR (Ultra eXtra Refractive Index) elements are special optical glasses with a very high refractive index. Their properties allow a shorter overall length and therefore lighter lenses with smaller diameters, without changing the aperture size.

Anti-reflective and high-tech coatings

The surfaces of the lens elements compensated elaborately. The multiple coatings contribute significantly to the high reproduction performance of Tamron lenses.

BBAR BBAR G2 The BBAR coating prevents light incident on the lens surface from being reflected and scattered. Brightness and contrast losses are avoided and "ghost images" are prevented. The BBAR coating also contributes to a natural colour rendering. Since 2019, the advanced BBAR G2 coating has been used.

eBAND The eBAND coating consists of a wafer-thin nanostructure (1 nm = 1/1,000,000 mm) with an extremely low refractive index. In combination with the underlying multi-coating, an outstanding anti-reflection effect is achieved.

FLR The fluoride coating permanently protects the front lens from contamination. Oil and water drops do not adhere to the surface, which is therefore very easy to clean.



Tamron's eBAND coating effectively prevents mirror images that can occur in back lit photographs as a result of reflections on the lens surfaces inside the lens.



Fast, precise and quiet autofocus moors

All Tamron lenses have a powerful auto-focus system. Depending on the model, the autofocus is powered by a variety of motors.

USD The SP Series lenses use USD (Ultrasonic Silent Drive) motors that convert ultrasonic waves into torque for high-precision, high-speed, near-silent focussing. The technology is based on a rotor and does not require a transmission between the motor and the focus ring. The photographer can thus manually intervene in the focus at any time. The USD autofocus is ideal for fast and dynamic subjects, for example in professional sports, wildlife and coverage photography.

OSD The OSD (Optimised Silent Drive) technology enables a particularly quiet focus. Lenses equipped with this lens are ideal for situations in which absolute quietness is required when taking photographs. In addition, the OSD autofocus is particularly responsive and adjusts to sharpness very precisely sharp, which has a positive effect, for example, in subject tracking.

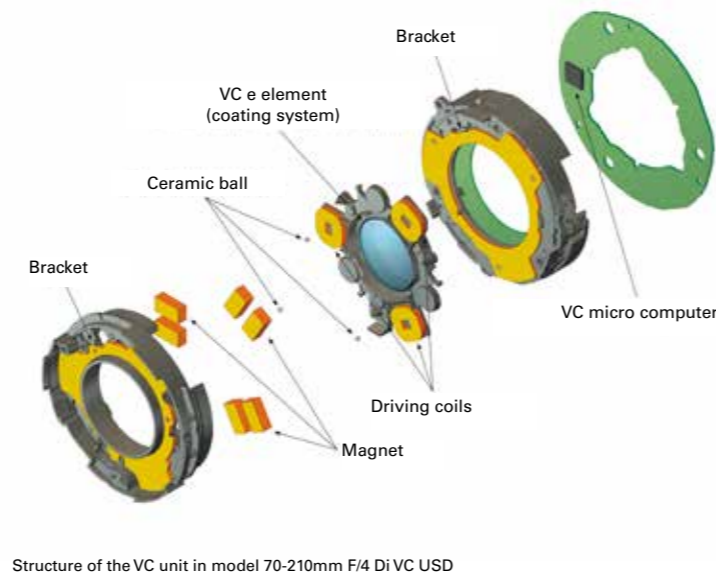
RXD The RXD (Rapid eXtra silent Drive) technology is based on a stepper motor, whose drive element controls the rotation angle precisely and silently; a sensor continuously determines the current focus setting of the lens. The RXD motor is so powerful that even videographers can continuously keep moving objects in the focus range.

HLD The HLD (High / Low Torque Modulated Drive) autofocus is a highly energy efficient motor that generates powerful torque to provide precise and quiet focusing. The curved HLD unit can be integrated into the lens design to save space and thus allows the construction of particularly compact lenses.

PZD The Piezo Drive (PZD) is also curved and the predecessor of the compact HLD motor. It is installed in the rear part of the lens to save space and is mainly used in the handy megazoom lenses from Tamron, which cover an exceptionally large focal length range with their complex zoom mechanism.

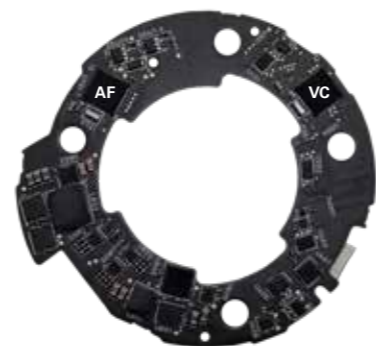
VC image stabilisation

VC Tamron's VC (Vibration coating) mechanism compensates for unwanted camera movement without delay and thus contributes to increased image sharpness. The optical image stabilisation is controlled by highly sensitive gyro sensors, which control the VC lens group resting on low-friction ball bearings. With the VC mechanism, the photographer can take up to 5 EV steps slower shutter speeds when shooting by hand and also gets a quieter viewfinder image. Newer Telephoto zoom lenses in the Tamron SP series have up to three VC modes for different shooting situations.



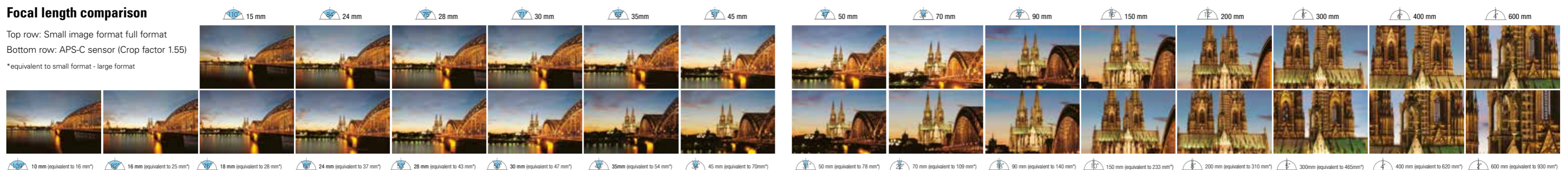
Dual MPU

DMPU Certain Tamron lenses are equipped with a dual MPU (Micro Processing Unit). This powerful dual processor has two parallel processor units that ensure instantaneous processing of the autofocus and VC image stabilizer digital signals. The lens reacts lightning fast to the commands of the camera. The result is a very precise focusing - even in dynamic shooting situations - with high-precision image stabilization at the same time.



Focal length comparison

Top row: Small image format full format
Bottom row: APS-C sensor (Crop factor 1.55)
*equivalent to small format - large format



Zoom lock mechanism

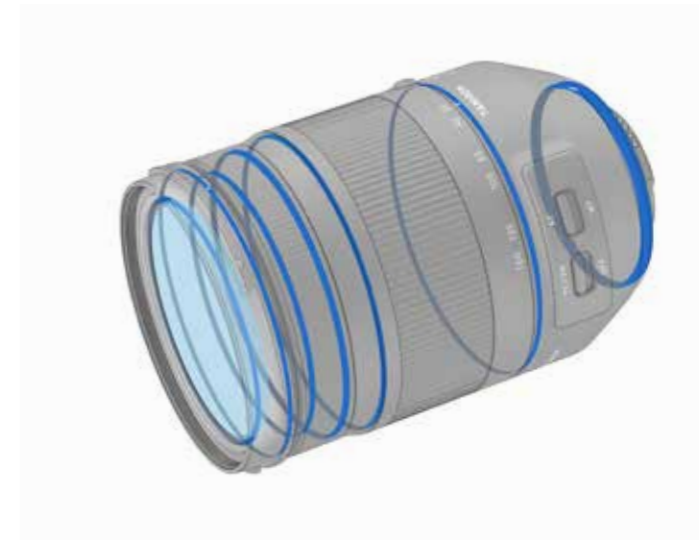
ZL The zoom lock mechanism, which can be operated by means of a switch, prevents unwanted extension of the lens tube when not in use. The barrier protects the lens from damage and still remains ready for use.

Internal focussing

IF For lenses with internal focussing, the extension length does not change when focussing, and the filter ring does not rotate with it. This facilitates handling, especially of longer tele zoom lenses, as well as photographing with polarization and gradation filters. Further advantages include the shorter focussing distance over the entire focus area and the lower light losses in the image corners (vignetting) and less focus-related aberrations.

Spray water protection

MR Tamron lenses have a weatherproof housing that optimally protects the sensitive interior against wind and weather. The sturdy outer casing is effectively sealed against moisture ingress at all critical points (e.g. between focus ring and tube or bayonet connection). This guarantees reliable operation even in the most adverse outdoor shooting conditions.

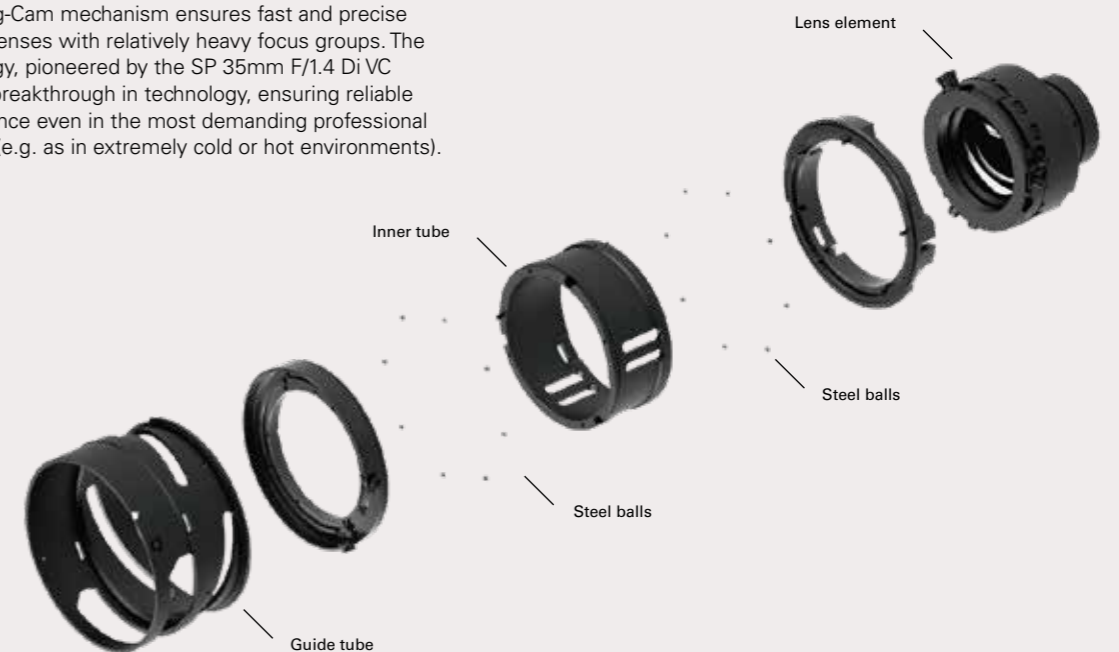


Multiple-cam mechanism

When developing compact zoom lenses, one challenge is to ensure a smooth and jerk-free extension of the lens tube. Tamron solves this problem using the multiple-cam mechanism with multiple precision curves in the cylindrical surface of the lens chassis. These enable sensitive movements in the wide-angle range and a constant extension in the telephoto range.

Dynamic Rolling-Cam mechanism

The Dynamic Rolling-Cam mechanism ensures fast and precise autofocus even on lenses with relatively heavy focus groups. The innovative technology, pioneered by the SP 35mm F/1.4 Di VC USD, represents a breakthrough in technology, ensuring reliable autofocus performance even in the most demanding professional shooting situations (e.g. as in extremely cold or hot environments).



	PAGE	MODEL	FOCAL LENGTH mm	ANGLE OF VIEW (diagonal) (°) = values for cameras with APS-C sensor	LARGEST APERTURE F	SMALLEST APERTURE F	APERTURE BLADES	LENS CONSTRUCTION Elements/ Groups	SHORTEST MINIMUM FOCUSING DISTANCE cm	MAX. IMAGE RATIO	FILTER SIZE Ø mm	WEIGHT ³ g	DIAMETER x LENGTH ⁴ mm	CANON DSLR	NIKON DSLR	MFT (Micro Four Thirds)	MIRRORLESS SYSTEM CAMERAS (DSLM)	LENSHOODS (Included)	NOTES
Di For digital SLR cameras with full-format and APS-C sensor																			
SP 35mm F/1.4 Di USD	11	F045	35	63°26'	1.4	16	9 ¹ abgerundete Lamellen	14-10	30	1:5	72	815 (Canon) 805 (Nikon)	80,9 x 104,8 (Canon) 80,9 x 102,3 (Nikon)	•	•			HF045	Optionally available: TAP-in Console
SP 35mm F/1.8 Di VC USD	11	F012	35	63°26'	1.8	16	9 ¹ abgerundete Lamellen	10-9	20	1:2,5	67	450	80,4 x 78,3	•	•			HF012	Optionally available: TAP-in Console
SP 45mm F/1.8 Di VC USD	11	F013	45	51°21'	1.8	16	9 ¹ abgerundete Lamellen	10-8	29	1:3,4	67	520	80,4 x 89,2	•	•			HF013	Optionally available: TAP-in Console
SP 85mm F/1.8 Di VC USD	11	F016	85	28°33'	1.8	16	9 ¹ abgerundete Lamellen	13-9	80	1:7,2	67	660	84,8 x 88,8	•	•			HF016	Optionally available: TAP-in Console
SP AF 90mm F/2.8 Di MACRO 1:1	-	272E	90	27°2'	2.8	32	9	10-9	29	1:1	55	400	71,5 x 97,0	•	•			2C9FH	
SP 90mm F/2.8 Di MACRO 1:1 VC USD	16	F017	90	27°2'	2.8	32	9 ¹ abgerundete Lamellen	14-11	30	1:1	62	600	79,0 x 114,6	•	•			HF017	Optionally available: TAP-in Console
SP 15-30mm F/2.8 Di VC USD G2	9	A041	15-30	110°32' - 71°35'	2.8	22	9 ¹ abgerundete Lamellen	18-13	28	1:5	Einschubfilter am Bajonett (Canon)	1.110 (Canon) 1.100 (Nikon)	98,4 x 145 (Canon) 98,4 x 142,5 (Nikon)	•	•			N/A	The lens hood is permanently connected to the lens, inclusive Soft bag Optionally available: TAP-in Console
17-35mm F/2.8-4 Di OSD	13	A037	17-35	103°41'-63°26'	2.8-4	16-22	7	15-10	28	1:4,9	77	460	83,6 x 92,5 (Canon) 83,6 x 90 (Nikon)	•	•			HA037	Optionally available: TAP-in Console
SP 24-70mm F/2.8 Di VC USD G2	9	A032	24-70	84°04'-34°21'	2.8	22	9 ¹ abgerundete Lamellen	17-12	38 ²	1:5	82	905 (Canon) 900 (Nikon)	88,4 x 111 (Canon) 88,4 x 108,5 (Nikon)	•	•			HA032	Included: Soft case Optionally available: TAP-in Console
SP AF 28-75mm F/2.8 XR Di LD Aspherical [IF] MACRO	-	A09	28-75	75°23'-32°11'	2.8	32	7	16-14	33 ²	1:3,9	67	510	73,0 x 92,0	•	•			DA09	
28-300mm F/3.5-6.3 Di VC PZD	-	A010	28-300	75°23'-8°15'	3.5-6.3	22-40	7 ¹ abgerundete Lamellen	19-15	49 ²	1:3,5	67	540	74,4 x 96,0	•	•			HA010	
35-150mm F/2.8-4 Di VC OSD	13	A043	35-150	63°26'-16°25'	2.8-4	16-22	9 ¹ abgerundete Lamellen	19-14	45 ²	1:3,7	77	796 (Canon) 760 (Nikon)	98,4 x 126,8 (Canon) 98,4 x 124,3 (Nikon)	•	•			HA043	Optionally available: TAP-in Console
SP 70-200mm F/2.8 Di VC USD G2	9	A025	70-200	34°21'-12°21'	2.8	22	9 ¹ abgerundete Lamellen	23-17	95 ²	1:6,1	77	1.485	88 x 191,3	•	•			HA025	Included: Soft case, tripod clamp Optionally available: 1.4x/2.0x teleconverter, TAP-in Console
SP AF 70-200mm F/2.8 Di LD [IF] MACRO	-	A001	70-200	34°21'-12°21'	2.8	32	9	18-13	95 ²	1:3,1	77	1.320	89,5 x 194,3	•	•			HA001	
70-210mm F/4 Di VC USD	17	A034	70-210	34°21'-11°46'	4	32	9 ¹ abgerundete Lamellen	20-14	95 ²	1:3,1	67	860 (Canon) 850 (Nikon)	76 x 176,5 (Canon) 76 x 174 (Nikon)	•	•			HA034	Optionally available: 1.4x/2.0x teleconverter, tripod clamp, TAP-in Console
SP 70-300mm F/4-5.6 Di VC USD	-	A005	70-300	34°21'-8°15'	4-5.6	32-45	9	17-12	150 ²	1:4	62	765	81,5 x 142,7	•	•			HA005	
AF 70-300mm F/4-5.6 Di LD MACRO	-	A17	70-300	34°21'-8°15'	4-5.6	32-45	9	13-9	150 (95 Macro)	1:2	62	458	76,6 x 116,5	•	•			DA17	
100-400mm F/4.5-6.3 Di VC USD	17	A035	100-400	24°24'-6°12'	4.5-6.3	32-45	9 ¹ abgerundete Lamellen	17-11	150 ²	1:3,6	67	1.135 (Canon) 1.115 (Nikon)	86,2 x 199 (Canon) 86,2 x 196,5 (Nikon)	•	•			HA035	Optionally available: 1.4x/2.0x teleconverter, tripod clamp, TAP-in Console
SP 150-600mm F/5-6.3 Di VC USD	-	A011	150-600	16°25'-4°8'	5-6.3	32-40	9 ¹ abgerundete Lamellen	20-13	270 ²	1:5	95	1.951	105,6 x 257,8	•	•			HA011	Included: Tripod clamp, soft case Optionally available: Tripod clamp (long version)
SP 150-600mm F/5-6.3 Di VC USD G2	17	A022	150-600	16°25'-4°8'	5-6.3	32-40	9 ¹ abgerundete Lamellen	21-13	220 ²	1:3,9	95	1.990	108,4 x 260,2 (Canon) 108,4 x 257,7 (Nikon)	•	•			HA022	Included: Soft case, tripod clamp Optionally available: 1.4x/2.0x teleconverter, TAP-in Console

TAP-in Console

With the TAP-in Console and the free TAP-in-utility software, the lens firmware can be updated and the operation of the lenses individually adapted. Among other things, settings can be made that previously could only be done on site at the Tamron service. The configurable parameters include: Focus adjustment, setting the focus limiter, optimisation of the manual focus function and calibration of the VC image stabiliser.

Download the TAP-in Utility Software from:
<http://www.tamron.co.jp/software/en/tapin/>



Teleconverter

The TC-X14 and TC-X20 teleconverters allow the focal length of compatible Tamron lenses to be extended by the factors 1.4x or 2.0x. The high imaging performance of the lens remains unaffected.

Left: TC-X14 (1.4-x)
Right: TC-X20 (2.0x)



Tripod clamp

With the ARCA-SWISS compatible tripod clamps, Tamron SP series telephoto zoom lenses, as well as the 70-210mm F/4 Di VC USD and the 100-400mm F/4.5-6.3 Di VC USD, can balance optimally on the tripod.



Lens	SP 35mm F/1.4 Di VC USD	SP 35mm F/1.8 Di VC USD	SP 45mm F/1.8 Di VC USD	SP 85mm F/1.8 Di VC USD	SP 90mm F/2.8 Di MACRO 1:1 VC USD	10-24mm F/3.5-4.5 Di II VC HLD	SP 15-30mm F/2.8 Di VC USD G2	17-35mm F/2.8-4 Di OSD	18-400mm F/3.5-6.3 Di II VC HLD	SP 24-70mm F/2.8 Di VC USD G2	35-150mm F/2.8-4 Di VC OSD	SP 70-200mm F/2.8 Di VC USD	SP 70-200mm F/2.8 Di VC USD G2	70-210mm F/4 Di VC USD	100-400 F/4.5-6.3 Di VC USD	SP 150-600mm F/5-6.3 Di VC USD	SP 150-600mm F/5-6.3 Di VC USD G2
TAP-in Console (optional)	•	•	•	•	•	•	•	•	•	•	•	•	•	•	•	•	•
Teleconverter (optional)													•	•	•		•
Tripod clamp (optional)														•	•		
Tripod clamp (included)												•	•			•	•

	PAGE	MODEL	FOCAL LENGTH mm	ANGLE OF VIEW (diagonal) (°) = values for cameras with APS-C sensor	LARGEST APERTURE F	SMALLEST APERTURE F	APERTURE BLADES	LENS CONSTRUCTION Elements/ Groups	SHORTEST MINIMUM FOCUSING DISTANCE cm	MAX. IMAGE RATIO	FILTER SIZE Ø mm	WEIGHT ³ g	DIAMETER × LENGTH ⁴ mm	CANON DSLR	NIKON DSLR	MFT (Micro Four Thirds)	MIRRORLESS SYSTEM CAMERAS (DSLM)	LENSHOODS (included)	NOTES
Di II For digital SLR cameras with APS-C Sensor																			
10-24mm F/3.5-4.5 Di II VC HLD	18	B023	10-24	108°44'-60°20'	3.5-4.5	22-29	7 ¹ abgerundete Lamellen	16-11	24 ²	1:5,3	77	440	83,6 × 82,1	•	•			HB023	Optionally available: TAP-in Console
16-300mm F/3.5-6.3 Di II VC PZD MACRO	18	B016	16-300	82°12'-5°20'	3.5-6.3	22-40	7 ¹ abgerundete Lamellen	16-12	39 ²	1:2,9	67	540	75,0 × 99,5	•	•			HB016	
SP AF 17-50mm F/2.8 XR Di II VC LD Aspherical [IF]	-	B005	17-50	78°45'-31°11'	2.8	32	7	19-14	29 ²	1:4,8	72	570	79,6 × 94,5	•	•			AB003	
SP AF 17-50mm F/2.8 XR Di II LD Aspherical [IF]	-	A16	17-50	78°45'-31°11'	2.8	32	7	16-13	27 ²	1:4,5	67	440	73,8 × 83,2	•	•			DA09	
18-200mm F/3.5-6.3 Di II VC	18	B018	18-200	75°33'-7°59'	3.5-6.3	22-40	7 ¹ abgerundete Lamellen	16-14	49-77	1:4	62	400	75,0 × 94,1	•	•			HB018	
18-270mm F/3.5-6.3 Di II VC PZD	-	B008TS	18-270	75°33'-5°55'	3.5-6.3	22-40	7	16-13	49 ²	1:3,8	62	450	74,4 × 88,0	•	•			DA018	
18-400mm F/3.5-6.3 Di II VC HLD	15	B028	18-400	75°33'-4°	3.5-6.3	22-40	7 ¹ abgerundete Lamellen	16-11	45 ²	1:2,9	72	710 (Canon) 705 (Nikon)	79 × 123,9 (Canon) 79 × 121,4 (Nikon)	•	•			HB028	Optionally available: TAP-in Console
Di III For mirrorless system cameras																			
20mm F/2.8 Di III OSD M1:2	4	F050	20	94°30'	2.8	22	7 ¹ abgerundete Lamellen	10-9	11	1:2	67	220	73 × 64				Sony: •	HF050	for SONY E-mount with full-format sensor
24mm F/2.8 Di III OSD M1:2	5	F051	24	84°04'	2.8	22	7 ¹ abgerundete Lamellen	10-9	12	1:2	67	215	73 × 64				Sony: •	HF050	for SONY E-mount with full-format sensor
35mm F/2.8 Di III OSD M1:2	5	F053	35	63°26'	2.8	22	7 ¹ abgerundete Lamellen	9-8	15	1:2	67	210	73 × 64				Sony: •	HF053	for SONY E-mount with full-format sensor
14-150mm F/3.5-5.8 Di III	-	C001	14-150	75°22'-8°15'	3.5-5.8	22	7 ¹ abgerundete Lamellen	17-13	50 ²	1:3,8	52	285	63,5 × 80,4			•		HC001	Available in two colour versions: Black and Silver
17-28mm F/2.8 Di III RXD	6	A046	17-28	103°41'-75°23'	2.8	22	9 ¹ abgerundete Lamellen	13-11	19-26	1:5,2 (wide) 1:6 (tele)	67	420	73,0 × 99				Sony: •	HA046	for SONY E-mount with full-format sensor
18-200mm F/3.5-6.3 Di III VC	-	B011	18-200	75°33'-7°59'	3.5-6.3	22-40	7	17-13	50 ²	1:3,7	62	460	68,0 × 96,7				Canon: • Sony: •	HB011	For mirrorless APS-C system cameras from Canon and Sony; available in two colour variants: Black and Silver; ** weight and diameter × length (total length) values apply to the corresponding model with Sony mount.
28-75mm F/2.8 Di III RXD	6	A036	28-75	75°23'-32°11'	2.8	22	9 ¹ abgerundete Lamellen	15-12	19-39	1:2,9	67	550	73,0 × 117,8				Sony: •	HA036	for SONY E-mount with full-format sensor
70-180mm F/2.8 Di III VXD	7	A056	70-180	34°21'-13°42'	2.8	22	9 ¹ abgerundete Lamellen	19-14	85	1:4,6	67	810	81 × 149				Sony: •	HA056	for SONY E-mount with full-format sensor

Notes

- The blades form an almost circular shape when the aperture is open. This shape is maintained largely when stopping down by up to two stops.
- Minimum object distance over the entire range of focal lengths.
- Weight including the removable tripod mount ring. Unless otherwise stated, the weights refer to the Nikon mount
- The length is defined by the distance from the contact surface on the camera body to the lens tip. The values regarding weight and diameter × length apply to the respective model with Nikon connection (except C001, B011 and A036).

Notes on model B011

When using the AFC mode (Continuous AF) with 18-200mm Di III VC, please note:

- During the use of the "Sports mode" scene program, continuous focusing (AFC) may result in a faulty display ("pumping") of the image on the LCD monitor. However, the quality of the image capture is not affected thereby.
- In the case of continuous focusing (AFC), the same faulty display of the image on the LCD monitor can occur in the recording modes P, A, S, M. The effect will not affect the photos taken in this situation either.
- When shooting with Single AF (AF-S) or Direct Manual Focus (DMF), this phenomenon does not appear.

Caution: If the camera displays an error message or the LCD monitor remains black when using lenses with a Canon connection, the signal transmission between the camera and the lens may not work properly and in very rare cases malfunction may occur. To solve the problem, please proceed as follows:

- Switch the camera off.
- Ensure there is no dirt on the signal contacts in the lens and/or the camera.
- If the problem continues, please switch the camera off and remove the battery. Re-insert the battery and switch the camera back on.

Compatibility
Nikon Z / Canon EOS R

Information when using Tamron lenses with Nikon Z6/Z7 and Canon EOS R / RP can be found under:
www.tamron.eu/de/service/kompatibilitaet-nikon-z-und-canon-eos-r/

Lens hood

All Tamron lenses are supplied with a lens hood adapted to the respective lens. This lens attachment prevents lateral light rays entering the lens and thereby minimises the risk of dispersion and reflections negatively influencing the image quality on the inside of the lens.



Design and haptics

Tamron not only values technological innovation, but also pays particular attention to the design of its products. When designing the lenses, the developers are guided by the concept of the "Human Touch", a harmonious design language that combines pleasant haptics and intuitive operation.

The light golden ring, which connects the lens to the camera, symbolizes thereby the connection between Tamron and the photographer at the same time.

TAMRON

Transcontinenta UK LTD
896 Plymouth Road,
Slough Trading Estate
Slough
Berkshire SL1 4LP
T +44 (0)203 9665947

February 2020 edition EN

**FOLLOW
TRANSCONTINENTA!**

 **FACEBOOK**
www.facebook.com/TranscontinentaUK

 **INSTAGRAM**
www.instagram.com/TranscontinentaUK